



2024
Sustainability Report
SDG11

**11 SUSTAINABLE CITIES
AND COMMUNITIES**



ABDULLAH GÜL
UNIVERSITY



SUSTAINABLE DEVELOPMENT GOALS

11 SUSTAINABLE CITIES AND COMMUNITIES



SDG11: Sustainable Cities and Communities

More than half the world's population currently reside in cities. However, cities are grappling with a multitude of complex issues, made more difficult by rising global urban poverty levels in the wake of COVID-19. From rising slum populations, insufficient public transport and city expansion outpacing population growth to threats to critical infrastructure and the disruption of basic services owing to disasters, it is essential that cities be equipped to adequately handle those challenges. As the world turns more urban, with nearly 70 per cent of the global population projected to reside in cities by 2050, critical infrastructure, affordable housing, efficient transport and essential social services are crucial for creating resilient, sustainable cities for all.



Target 11.1: In 2022, 24.8 per cent of the urban population lived in slums or slum-like conditions, slightly lower than in 2015, when the figure was 25.0 per cent, but higher than in 2020, when it was 24.2 per cent. The total number of slum dwellers was 1.12 billion in 2022, 130 million more than in 2015. Over 85.0 per cent of slum dwellers were concentrated in Central and Southern Asia (334 million), Eastern and South-Eastern Asia (362 million) and sub-Saharan Africa (265 million). In 2022, sub-Saharan Africa had the highest percentage of the urban population living in slums, at 53.6 per cent. Projections suggest that sub-Saharan Africa will experience the greatest proportional increase in slum dwellers, with an additional 360 million expected by 2030. That emphasizes the urgent need for a comprehensive approach to addressing the urban housing crisis, including by providing varied housing options and equitable access to basic services.

¹ <https://sdgs.un.org/goals/goal11>

Target 11.2: Data collected in 2023 from 2,039 cities across 188 countries show that 6 out of 10 urban residents worldwide have convenient public transport access, with notable gaps between developed and developing regions. In least developed countries, only 4 out of 10 people have access, compared with 8 out of 10 in more developed regions. Investments are urgently needed to expand access, especially in impoverished urban areas in developing countries.

Target 11.3: Data from 1,217 cities across 185 countries show that cities are sprawling faster than they are densifying. Between 2000 and 2020, cities expanded up to 3.7 times faster than they densified. Globally, sprawl averaged 5.6 per cent annually, while densification was only 1.5 per cent. Despite a slight decline in sprawl rates from 2010 to 2020, they still exceeded densification rates, displacing ecologically valuable lands. Balancing people, prosperity and the planet by 2030 requires concerted efforts at the local, subnational and national levels to curb urban sprawl.

Target 11.5: On average, 104,049 critical infrastructure units and facilities were destroyed or damaged by disasters annually from 2015 to 2022. Furthermore, disasters disrupted over 1.6 million basic services, including educational and health services, each year.

Target 11.6: Globally, there was a 9 per cent decrease in the population-weighted exposure to fine particulate matter from the period 2010–2014 to the period 2015–2019, dropping from 39.1 to 35.7 $\mu\text{g}/\text{m}^3$. That is close to the interim target 1 value of 35 micrograms per *cubic* metre under the air quality guidelines of the World Health Organization.

Target 11.7: Data from 1,365 cities across 187 countries reveal that access to open public spaces is notably deficient in least developed countries, where fewer than 3 in 10 people can conveniently reach such areas. Conversely, in high-performing areas, such as Australia and New Zealand or Europe and Northern America, approximately 6–7 out of 10 urban residents enjoy convenient access to open public spaces. That disparity highlights the prevalent global challenge.

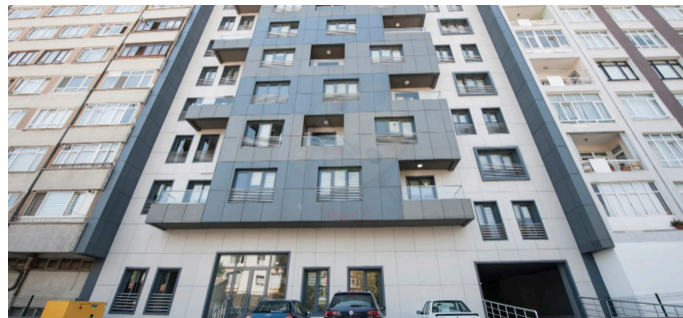
Target 11.b: Local-level risk governance has improved in recent years; in 2023, 106 countries cumulatively reported having local disaster risk reduction strategies in place and in line with national strategies. On average, 72 per cent of local governments in reporting countries specified having local disaster risk reduction strategies.²

² <https://unstats.un.org/sdgs/files/report/2023/secretary-general-sdg-report-2023--EN.pdf>

AGU'S POLICIES AND PRACTICES

Abdullah Gül University's (AGU) 2023-2027 Strategic Plan (pg. 56) includes developing infrastructure and systems that will enable remote access to training activities. In this context, with the effect of COVID-19, AGU has completed the necessary infrastructures (Schoology, Canvas, Mural, Mentimeter, Zoom, etc.) for remote working and education. AGU, as a public university, conducts remote working under Labor Law No. 4857 and the Remote Working Regulation No. 31419. AGU has established a remote working system for its staff and faculty members as a standard practice. A VPN account was created by our IT Department for staff working remotely. The workflow chart for Distance Education Request Transactions was created for remote education.

AGU provides subsidized housing services to its staff at the University apartments located on and off campus. In these residences, residents only pay for the operating fees (electricity, water, natural gas) based on their individual use. AGU has a Guest Houses Directive for visitors using its social facilities.



AGU Guest Houses

- **Affordability Assessment for Staff**

Located in the city center, Osman Ceylan Housing offers affordable short- and long-term accommodation for AGU staff, visiting scholars, and Erasmus, master's, and PhD students. In 2024, the average rent for a 1+1 apartment is 4,845 TRY per month, including only utility costs. This rate is 63 lower than the local market average of 12,998 TRY, saving residents over 8,000 TRY monthly. About 30% of AGU staff live in these centrally located units, available in 1+1 to 4+1 layouts. For long-term staff, AGU also provides İç Vazife Residences—spacious homes up to 220 m²—at a monthly rate of 6,201.60 TRY, which is 56% below the market average of 14,130 TRY for similar 3+1 apartments. Considering Türkiye's average monthly disposable income of 15,644 TRY (TurkStat, 2024), these subsidized housing options represent only 31–39% of income, ensuring substantial savings. Through these provisions, AGU supports accessible, affordable, and quality housing for its academic community.

- **Affordability Assessments for Students**

YÖK (council of higher education) provides affordable and high-quality housing for its students through the AGU Student Village and KYK (*Higher Education Credit and Dormitories Institution*) dormitories. The Student Dormitories Commission is responsible for managing student housing, including allocation, affordability evaluation, admission criteria, and pricing based on local market conditions and AGU's financial aid policies. The AGU Student Village, established in 2014 and expanded in 2016, accommodates up to 542 students in modern facilities located just five minutes *walk* from Sümer Campus. Each building includes 125 m² living areas with security, storage, administrative offices, a cafeteria, and recreational amenities such as tennis, basketball, and football courts.

In 2024, students under full scholarship pay **0 TRY**, while those receiving housing subsidies pay **2,350 TRY** per month. This subsidized fee is significantly lower than the **12,998 TRY** average market rent for a 1+1 apartment in Kayseri, representing just **18.1% of market value**. Compared to the general city average of **14,094 TRY**, it accounts for only **16.7%**. The fee also equals approximately **15%** of the national average *monthly disposable income* of **15,644 TRY** (*TurkStat, 2024*).

In addition to AGU's facilities, students can apply for KYK dormitories operated by the Ministry of Youth and Sports. As of 2024, Kayseri has **12 KYK dormitories**, seven of which are for female students. Monthly fees range from **517.5 to 720 TRY** and include breakfast. Currently, around **17.4% of AGU students** reside in KYK dormitories.

Table 1. AGU Student Housing Fees and Support Categories (2022-2023-2024)

Scholarship/Support Category	2024 Housing Fee for Student	Number of Students		
		2022	2023	2024
Housing-free	0	120	139	179
Housing-subsidized (financial support)	2350 TRY	380	361	363

Please find AGU Student Dormitory Application Process.

Please find the AGU Student Dormitory Regulations.

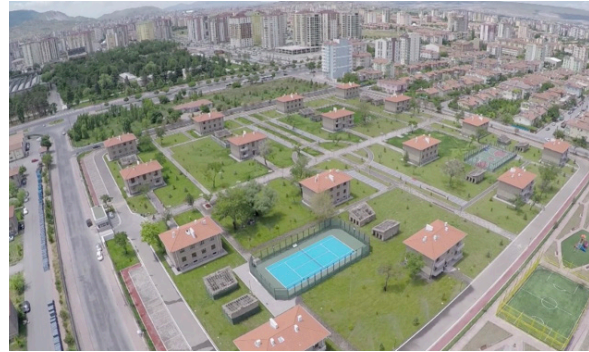
Please find AGU student village details.

AGU Student Village YouTube Video

2024 Housing Application Announcement

2024 Housing Application Results Announcement

2024 Announcement of Students Who Won Housing Scholarship According to YKS (Higher Education Institutions Exam) Placement Results



LEED Certificate

AGU Sümer Campus is an exemplary university site that has been progressing towards being green and environmentally friendly since its foundation. The most heavily used main building of AGU, which is a water-saving historic building, has been awarded a silver LEED certificate since 2015, thanks to its use of a grey water reuse system, energy saving etc.



As part of AGU's sustainability approach, various **smart systems** have been implemented across campus buildings to reduce energy and water consumption. In addition to architectural designs that maximize natural daylight, **sensor-controlled lighting systems** minimize energy use in unoccupied areas. Water-saving features such as **sensor faucets** with aerators and dual-flush toilets help control water consumption, while a **greywater system** allows for the reuse of wastewater in toilet flushing. Furthermore, **building insulation and automation systems** enhance energy efficiency and reduce environmental impact. *Please see the [Energy Efficiency studies](#).*



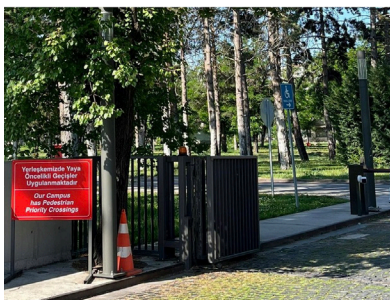
AGU has set specific, quantifiable objectives to encourage sustainable commuting and lower carbon emissions on campus. These objectives are in line with *AGU's Climate Action Plan* and are regularly evaluated by the *The Traffic Regulation Commission* (see page 4, commission no. 53) which is responsible for overseeing their execution and tracking within the broader context of campus sustainability initiatives.

Goals related to the aforementioned measures have been outlined in AGU's Climate Action Plan and are actively being monitored. For further details, please refer to page 18 of the Climate Action Plan and the table below.

Dimension	Goal	Targets	Target Year	Activities	Main Responsible	Support departments	Status of activities
Commuting and Transportation	G.17 Achieving Sustainable commuting arrangements	T.19 By 2026, at least 35% of students will come to university on foot	2026	A.37 Having periodic training for all	Department of Health, Culture and Sports	Sustainability Office Energy Management Unit Waste Management Committee Construction and Technical Works Department	Progress
		T.20 At least 45% of students should cycle to university by 2026	2026	A.38 Develop a Campus Transport and Accessibility Plan			Progress
			A.39 Providing secure bicycle storage and end-of-trip facilities in key campus locations	A.40 Establishing bicycle sharing system			Achieved
	A.41 Develop a Campus Transport and Accessibility Plan			Progress			
	G.18 Achieving Sustainable commuting projects	T.21 By 2026, at least 10% of students should come to university by public transport	2026	A.41 Develop a Campus Transport and Accessibility Plan			Progress
	G.19 Achieving Sustainable travel	T.22 By 2026, at least 45% of employees will have access to university on foot.	2026	A.42 Having periodic training for all			Progress
	G.20 Achieving Sustainable transportation of goods	T.23 At least 20% of employees should cycle to university by 2026	2026	A.43 Develop a Campus Transport and Accessibility Plan			Progress
				A.44 Providing secure bicycle storage and end-of-trip facilities in key campus locations			Achieved
	A.45 Establishing bicycle sharing system	Progress					
T.24 By 2026, at least 25% of students must come to university by public transport	2026	A.46 Develop a Campus Transport and Accessibility Plan	Progress				
T.25 Replacing university vehicles with electric vehicles and promoting the use of electric vehicles	2027	A.47 Evaluating opportunities to install AV and VC facilities and promote these as an alternative to travel	Waiting				
Commuting and Transportation	G.17 Achieving Sustainable commuting arrangements	T.26 Decreasing carbon emissions from work travel %10 by 2024	2024	A.48 Measuring and offset business travel carbon emissions	Department of Health, Culture and Sports	Sustainability Office Energy Management Unit Waste Management Committee Construction and Technical Works Department	Achieved
	G.18 Achieving Sustainable commuting projects	T.27 Achieving Sustainable transportation of goods 40% by 2026	2027	A.49 Establishing supplier management system			Progress
G.19 Achieving Sustainable travel							
G.20 Achieving Sustainable transportation of goods							

The Commission monitors these indicators each year to evaluate advancement. As part of the 2024 developments:

- The roads indicated in the image below have been closed to traffic.
- Entry from Erkilet Boulevard has been reorganized as a one-way traffic route, and all drivers must follow the traffic signs.
- A new parking area on the Erkilet Boulevard side of the campus has been completed and opened for use.



AGU's Pedestrian-Priority Crossings Practice



AGU Pedestrian-Priority Campus Practice



No Motor Vehicles Sign at Sümer Campus

AGU continues to prioritize pedestrian and bicycle access on campus to reduce motorized traffic and related emissions. The campus features illuminated pedestrian pathways for safe night use and maintains a speed limit of 30 km/h.

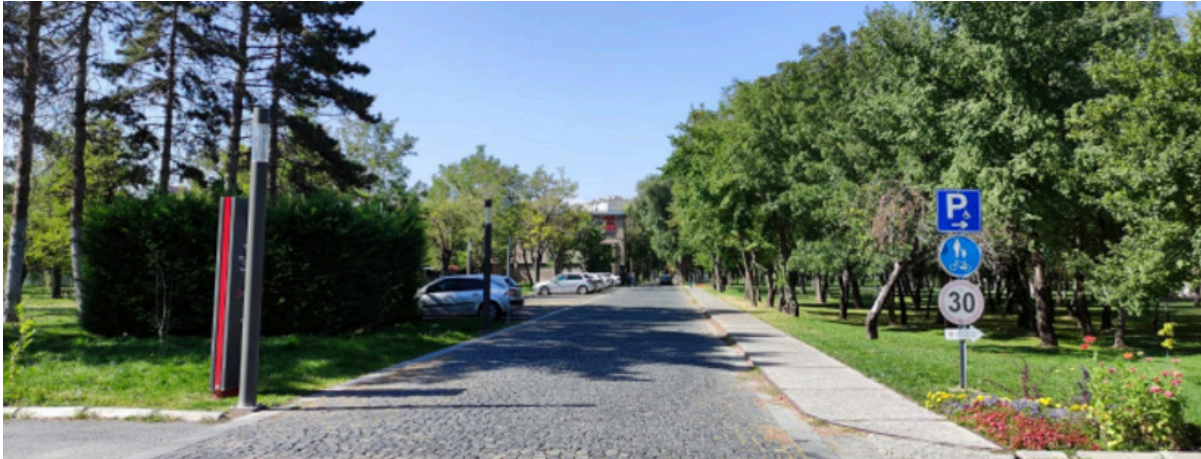


Figure. Warning signs indicating the campus speed limit



Figure. Bicycle parking spaces in front of buildings

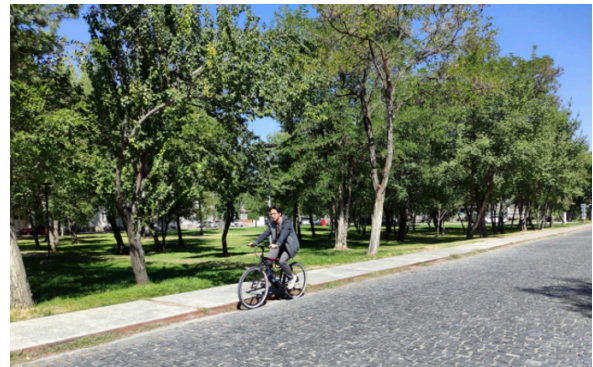


Figure. Transportation by bicycle on campus

Annual Performance Measurement and Carbon Footprint Certification

AGU monitors progress toward its sustainable commuting goals through annual carbon footprint assessments in accordance with TS EN ISO 14064-1:2018 standards. Comparative data from **2023 and 2024** provides insight into the effectiveness of current policies and guides continuous improvements in commuting strategies.

Category	2023 Emissions (t CO ₂ e)	2024 Emissions (t CO ₂ e)
Category 1 - Direct Emissions / Doğrudan emisyonlar	883.00	912.45
Category 2 - Emissions from purchased energy / Satın alınan enerji kaynaklı emisyonlar	1.287.18	1.525.57
Category 3 - Emissions from transportation / Uçaklı taşıma emisyonları	207.51	196.30
Category 4 - Emissions from products, services used / Kullanılan ürün - Hizmet kaynaklı emisyonlar	257.27	944.11
Category 5 - Emissions from associated with the use of the product / Ürün kullanımı kaynaklı em.	1.514.88	798.43
Category 6 - Other Emissions / Diğer emisyonlar	138.23	124.25
Total Location Based Emissions / Toplam Konum Bazlı Emisyonlar	4.886.63	4.554.70
Total Market Based Emissions / Toplam Pazar Bazlı Emisyonlar	4.886.63	4.554.70

Greenhouse Gas Certificates

Also, please [see](#) the [link1](#) and [link2](#) for our AGU's Carbon and Water Footprint Reports.

In 2024, as part of its ongoing efforts to promote sustainable commuting and healthy lifestyles, AGU expanded initiatives encouraging walking, cycling, and the use of on-campus fitness facilities. These measures support its Sustainable Practices Targets by reducing reliance on motorized transport and fostering active mobility. **Following evaluations by the Ministry of Health's Directorate of Nutrition and Physical Activity, AGU met all required criteria and was awarded the "Nutrition-Friendly and Physically Active Workplace" Certificate.** This achievement reflects AGU's strong commitment to both environmental sustainability and public well-being.



Arts and Heritage Contribution

The process of urbanization is accelerating on a global scale. *In order* to mitigate the adverse consequences of this rapid development, it is imperative that not only national governments but also municipalities, local communities, and particularly higher education institutions adopt comprehensive sustainability policies. Universities have a responsibility to establish constructive and enduring relationships with both urban and rural communities. At Abdullah Gül University (AGU), the campus hosts several historically significant buildings and facilities. One of the institution's fundamental objectives is the preservation of the community's cultural heritage, and specific policies are implemented to support this mission.

AGU Sümer Campus was built on the former premises of Sümerbank Kayseri Textile Factory, the first industrial site in Türkiye, and a protected *heritage site* and that now harbors both newly built and renovated historical buildings. AGU has brownfield land, a previously developed site that was not in use. Some of this *brownfield land* is used as agricultural land for sustainability in cooperation with the local municipality.

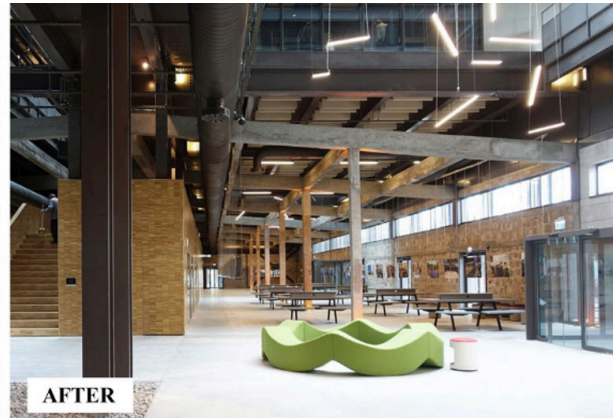


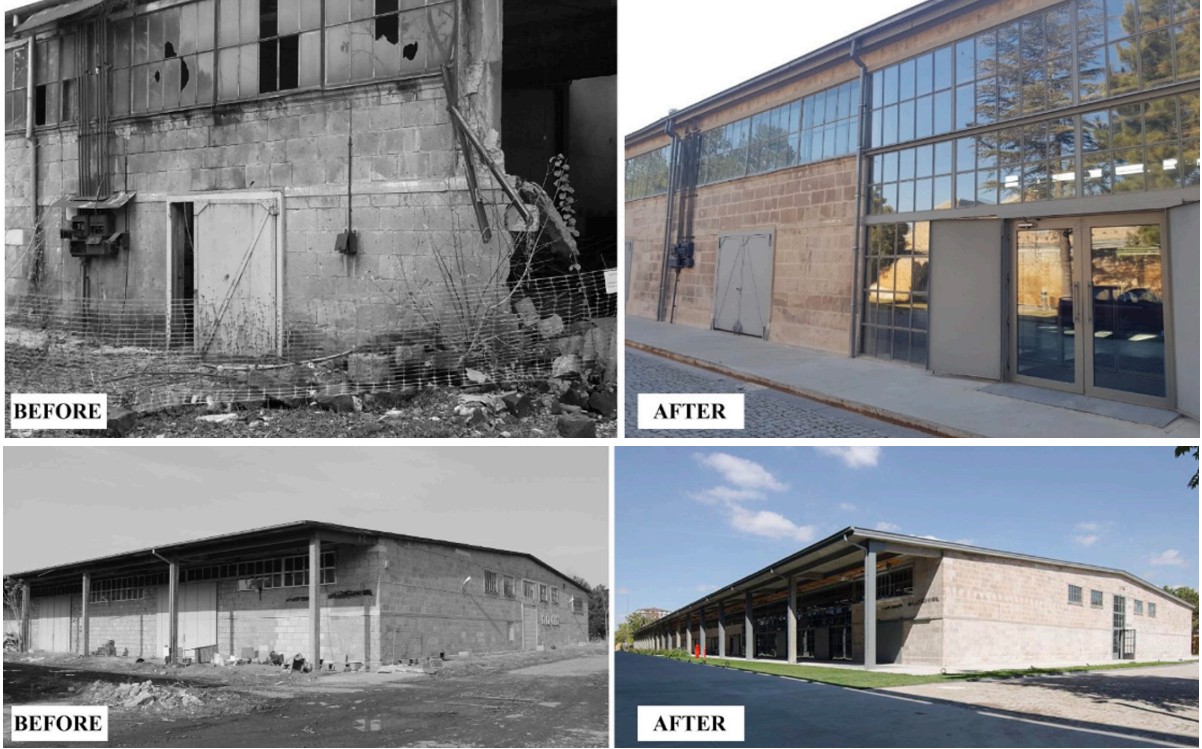
Each year, former employees of the Sümerbank Kayseri Textile Factory convene at the site of the historic complex, which currently serves as the campus of Abdullah Gül University (AGU). During events organized by the Faculty of Architecture, the Dean, Prof. Dr. Burak Asiliskender, engages with the attendees and provides detailed information regarding the ongoing restoration efforts within the former factory premises.



Traditional Meeting with Former Workers of Sümerbank Kayseri Textile Factory

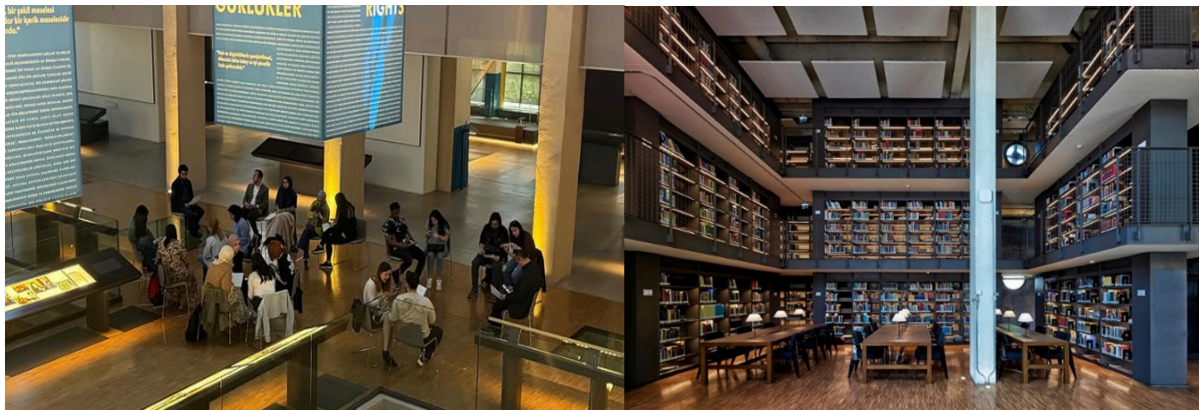
AGU continues to follow LEED standards (Silver certification (2015-present)) . Before the construction of the AGU “Büyük Ambar” (Large Warehouse) and “İtfaiye” (Fire Station) buildings, energy efficiency analyses were conducted based on the Guidelines on Public Building Standards, the Guidelines on Savings Target for Public Buildings and Its Implementation, and the CE environmental standards.





Restoration of AGU Buildings

The *Abdullah Gül Presidential Museum and Library*, located on the campus grounds and renovated from factory facilities, offers free access to the general public. It retraces the history of the Sümerbank Kayseri Textile Factory, an important historical heritage of the city, and showcases the life of Mr. Abdullah Gül, the 11th President of the Republic of Türkiye.

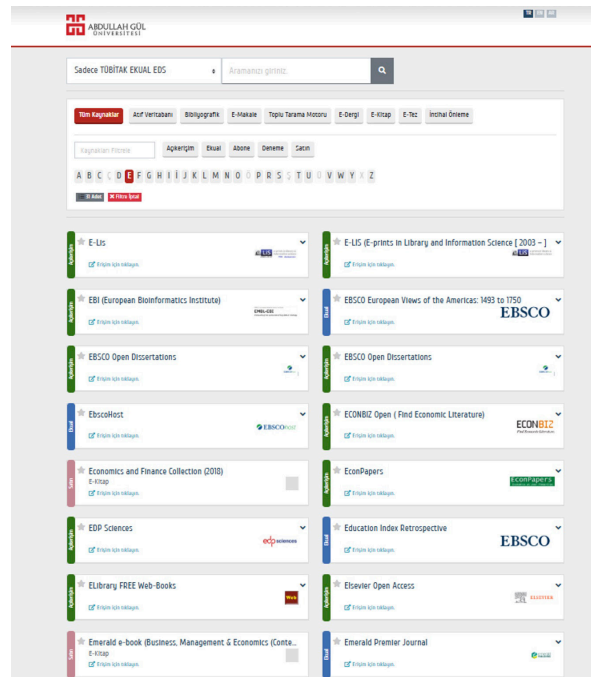


Abdullah Gül Presidential Museum & Library

Table 2. Institutions Visiting Abdullah Gül Museum Library in 2024

Institution Name	Event Date	Event Link
Alpaslan Primary School	19.01.2024	Link
Tema Educational Institutions	2.02.2024	Link
Nermin Eminoğlu Kindergarten	20.03.2024	Link
Sümer Academy Nursery	3.04.2024	Link
Özel Final Özgün Anatolian High School	4.04.2024	Link
Fatma Kemal Timuçin Anatolian High School	20.05.2024	Link
AGU International Staff Mobility Week	20.05.2024	Link
Bahçeşehir College	24.05.2024	Link
Çetin Şen Science and Art Center	27.05.2024	Link
Gazi Osman Paşa Primary School – 3 rd Grade Students	31.05.2024	Link
Kayseri Girls Anatolian Imam Hatip High School	5.06.2024	Link
Gaziosmanpaşa Primary School – 2 nd Grade Students	24.09.2024	Link
Murat Kantarcı Science and Art Center – Drama Workshop for Gifted Students	28.11.2024	Link
Vefa Anatolian High School	23.12.2024	Link

Additionally, AGU offers an Off-Campus Access System, which allows employees working remotely to effortlessly access university resources, digital databases, and communication platforms from any location.



AGU does not only have education units at its own Sümer Campus. The entire campus features an architectural design suitable for public exhibitions and conferences. Notably, the Steel Building offers an exhibition area accommodating up to 800 people. AGU hosts various art exhibitions, which are open to the public free of charge.

AGU's campus offers diverse venues for cultural and community activities. The **Steel Building** hosts contemporary art exhibitions, architecture panels, fairs, workshops, and recreational sports, reflecting AGU's commitment to versatile spaces. The **Great Warehouse**, a former textile storage, is now a large cultural hall for design expos and academic events. The **Rectorate Conference Hall** supports lectures, ceremonies, and cultural performances with professional facilities. Outdoor, the **Sümer Campus Green Areas** accommodate festivals, concerts, and informal gatherings. Together, these spaces foster openness, creativity, and community engagement at AGU.

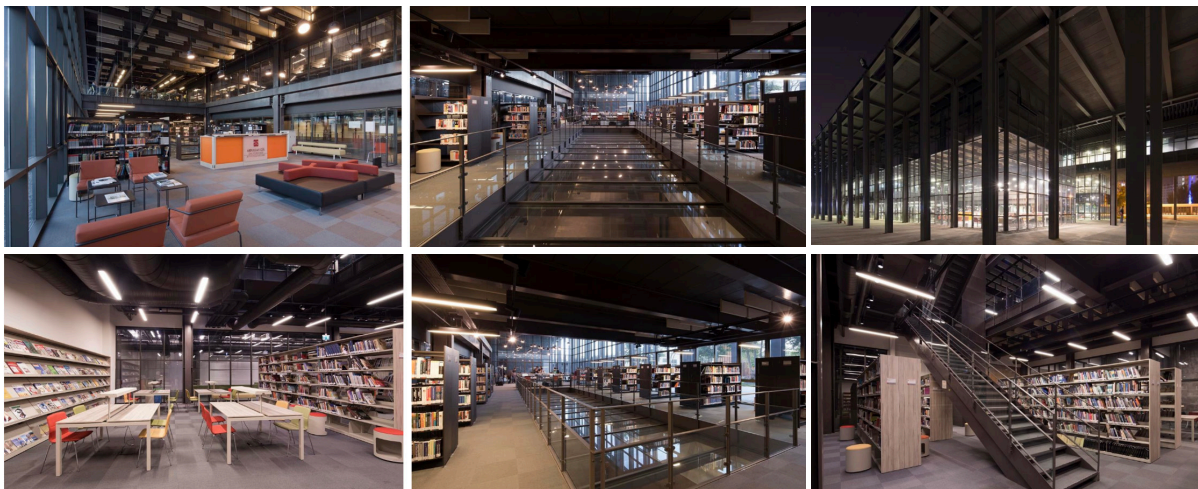


Steel Building

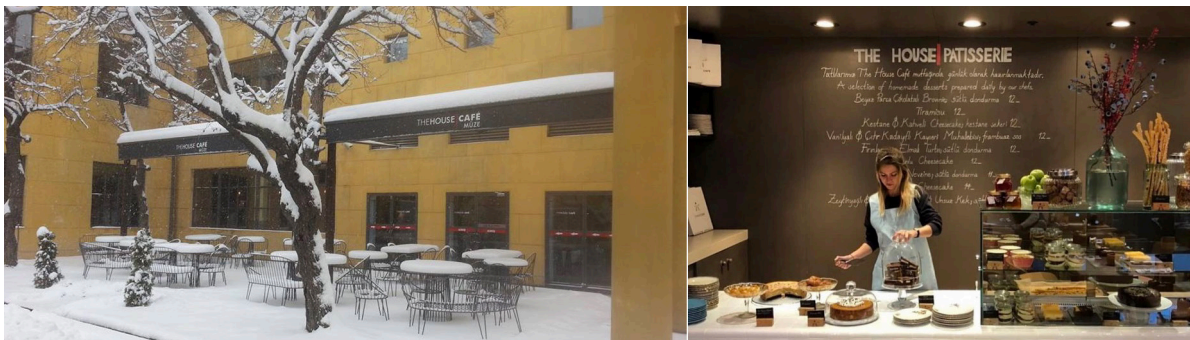


Great Warehouse

The AGU *Visitor Office* provides a free guide to the excursion program. Visitors can freely access and use the AGU's abundant green areas and *sports facilities* (upon reservation), visit the yearly exhibitions/expos and *cafes*, and use the *libraries* (University library and Abdullah Gül Museum Library in restored historical factory building), classrooms, restaurants, and join events. *The House Café* is one of the meeting points of the city and has an important brand value.



AGU Library



The House Café

Table 3. Campus Visitor Numbers

	2022	2023	2024
Visitor Number	67.320	77.830	89.450

The AGU Library organizes various workshops and activities for visiting primary, secondary, and high school students.



Campus visits from primary school and high school students

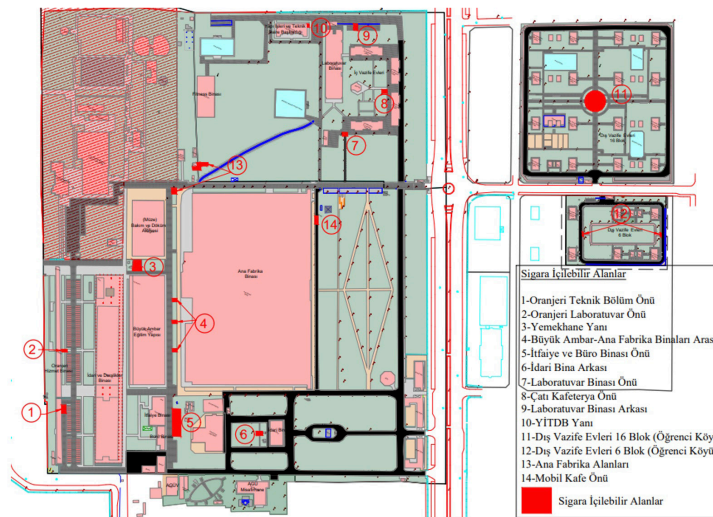
AGU has two significant student clubs that contribute to AGU's arts and heritage-themed activities:

The AGU Music and Performing Arts Club brings together students who love the arts and actively participates in a variety of creative projects. The club aims to connect both experienced and aspiring students interested in music, theater, and cinema. Our activities are diverse and based on members' interests, including performing at festivals and events, putting on theater productions and improvisations, hosting themed movie

nights, and taking part in film analysis and discussions.

AGU Culture and Literature Club strives to enhance students' cultural awareness, raise their sensitivity to both national and global issues, and develop their skills in responsibility, public speaking, and self-expression. Additionally, the club provides insights into Turkish and world cultures. It also offers various training sessions designed to equip university students with essential skills.

In addition to its historical character and the fact that it is Türkiye's largest "adaptive reuse" project, the most important feature of our campus is that it is green. In a 180-acre garden, lined with 80-year-old trees, the facilities offer a stress-free campus experience. The total available space on the University campus is 270,786.95 m². Of that, 99.56% (i.e., 269,596.68 m²) have been designated as non-smoking. Smoking is only allowed in an area of 1,190.27 m², that is to say, 00.44% of the total space. The University has implemented a *smoke-free campus policy*, thus helping to prevent non-smokers from picking up a smoking habit and encouraging users to space out usage times and make it more challenging for them to find tobacco products.



Smoking areas

Moreover, all AGU members can benefit from the University *bicycle-sharing program*, and a *shuttle service* is organized for all staff members to fulfill AGU's objectives of more sustainable commuting. *The bicycles are provided by Kayseri Ulaşım*. The Institutional Strategic objectives reflect the University's commitment to promoting sustainable commuting practices. This includes initiatives like subsidizing buses, shared transport schemes, providing bicycle parking and storage facilities, implementing pedestrian plans, and offering *limited* free car parking places.



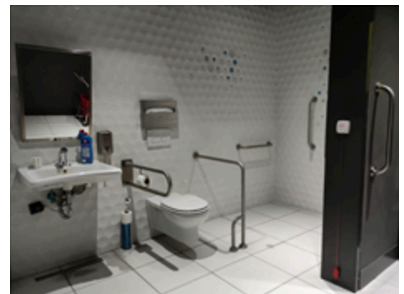
AGU's *Barrier-Free Unit* is dedicated to ensuring accessibility for people with disabilities. AGU provides sidewalk ramps, handicapped parking, large elevators, and accessible bathrooms in every building.



Smart hearing system application



Tactile surface applications



Call button app with drawstring



Warning signs on glass surface



Disabled ramp



Emergency call button application

AGU'S PROGRESS

2024



Number of courses offered
121



Number of students enroll the courses
6439



Number of publication
18



Number of dissertations
19



Number of Projects
10

2023



Number of courses offered
523



Number of students enroll the courses
4999



Number of publication
16



Number of dissertations
9



Number of Projects
4

Table 4. Status Update on Sustainable Commuting Goals (as of 2024)

Target Definition	2026 Target Value	Status (2022)	Status (2023)	Status (2024)	Progress from 2023 to 2024 (%) Note: This column represents the percentage change in student commuting habits from 2023 to 2024
Students commuting by foot	35%	27%	31%	32%	3%
Students using bicycles	15%	9%	12%	13% *Target Achieved	8%
Students using public transportation	60%	37%	53%	53% *Target Achieved	0%
Employees not using personal vehicles	50%	30%	31%	32.5%	4.8%

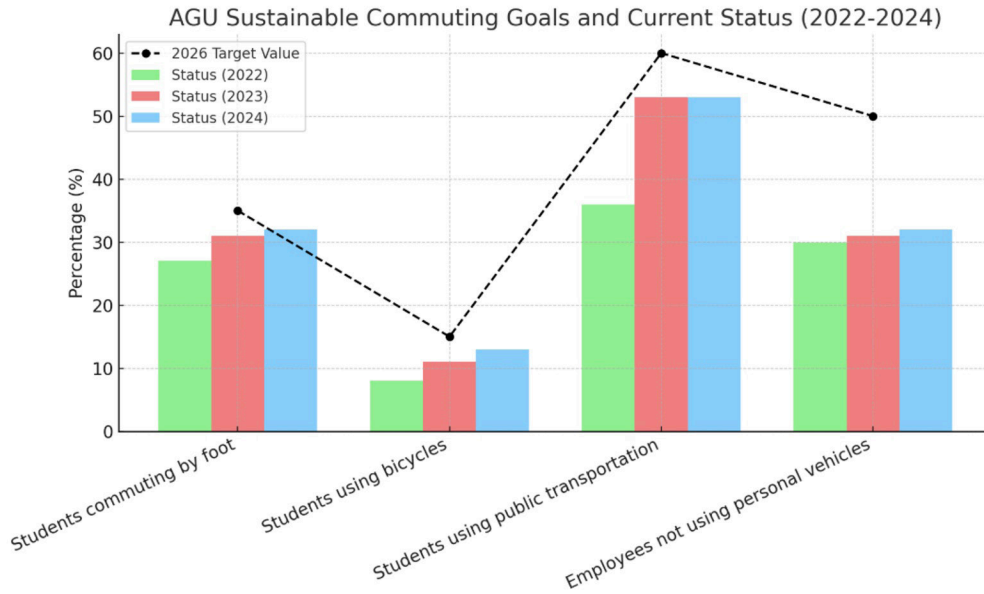
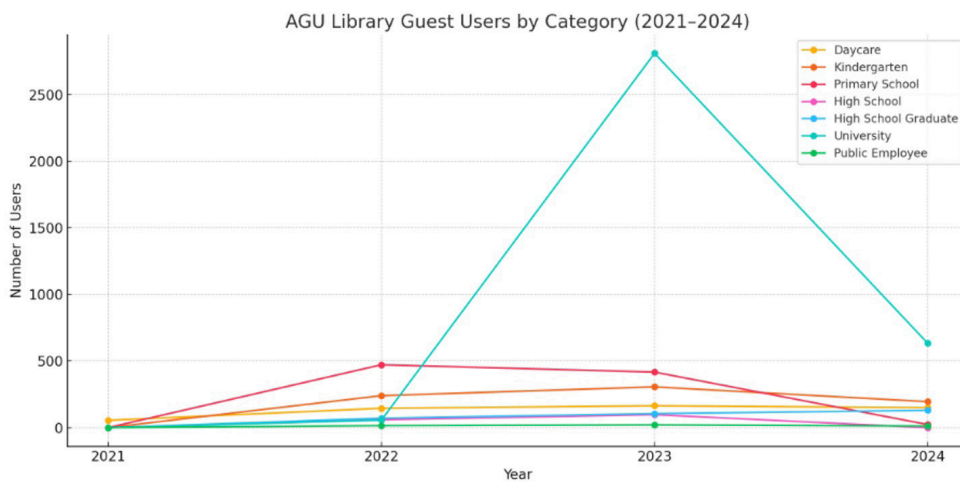


Table 5. Yearly Statistics of Guest Users Utilizing the AGU Library

GUEST USER STATISTICS BY YEARS								
YEAR	Daycare	Kindergarten	Primary School	High School	High School Graduate	University	Public Employee	Grand Total
2022	145	240	472	59	71	56	15	1,058
2023	164	306	417	97	105	2,811	21	3,921
2024	150	195	23	-	130	633	12	1,143

Graph 1. AGU Library Guest Statistics



In 2023, the number of guest users at the AGU Library increased nearly fourfold compared to the previous year, **rising from 1,058 to 3,921**. This sharp rise can be attributed to the **aftermath of the 2023 Türkiye Earthquakes**, during which the university **opened its campus facilities**—including the library—to various segments of the public for shelter and support purposes. In this context, **the decrease observed in 2024 should not be interpreted as a decline** in performance but **rather as a return to normal conditions** following an exceptional year. **The 2022 (1,058) and 2024 (1,143) figures are more reasonably comparable, indicating a slight recovery in 2024.**

RESEARCH AND PROJECTS

AGU aims to ensure sustainable cities and communities by conducting a lot of research and projects. Some of the projects carried out by AGU in this area are described below:

- **Preservation of Koramaz Valley Project**

In partnership with the Kayseri Metropolitan Municipality, AGU contributes to initiatives aimed at protecting the historical and ecological heritage of Koramaz Valley, which is listed on UNESCO's Tentative World Heritage List. These conservation efforts emphasize the value of the valley's cultural richness and biodiversity. Further details can be found [here](#).



- **Kültepe-Kanesh Archaeological Excavation Project national**

The Department of Architecture at AGU is working in collaboration with Ankara University on the Kültepe-Kanesh Archaeological Excavation. Kültepe-Kanesh, continuously inhabited since the Copper Age, was added to Türkiye's UNESCO Tentative World Heritage List in 2014. It is notably the site where the earliest known records of the Hittite language—also the earliest attested Indo-European language—dating back to the

20th century BC, were found. Since 2019, AGU has supported the excavation project as part of its mission to safeguard the cultural heritage of Central Anatolia.



The excavation permit can be accessed [here](#).

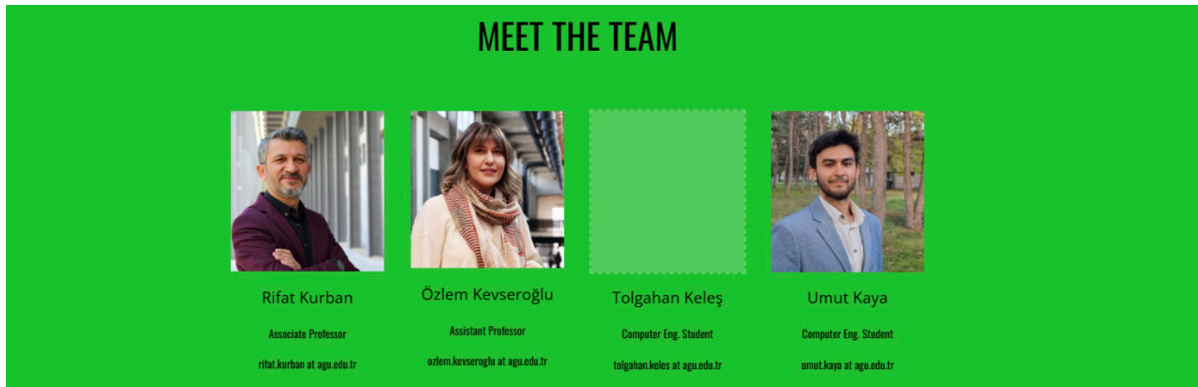
- Cappadocia - Kültepe – Koramaz Association and Kültepe & Koramaz Mobile App Project

The Cappadocia-Kültepe-Koramaz Association for History, Culture, Education and Research conducts historical and cultural studies focused on the Cappadocia region, the Kültepe archaeological site, and the Koramaz Valley. The association was established in Kayseri in 2021 by a group of volunteer participants, including academics, historians, and researchers.



In 2024, the association initiated the development of a mobile application covering the regions of Cappadocia, Kültepe, and the Koramaz Valley. Dr. Özlem Kevseroğlu, a faculty member at AGU and a member of the association, contributed by sharing routes and informational content.

The software development was carried out by two Computer Engineering students from AGU under the supervision of Assoc. Prof. Dr. Rifat Kurban. The project began in 2024 and was largely completed by 2025. The mobile application is now publicly available on Google Play.



- The Kerkenes Project

AGU takes part in the archaeological Kerkenes Project, which explores the remains of an important Iron Age city. The project involves excavation and geophysical surveys to uncover the city's historical significance. *Please see the Kerkenes Project.*

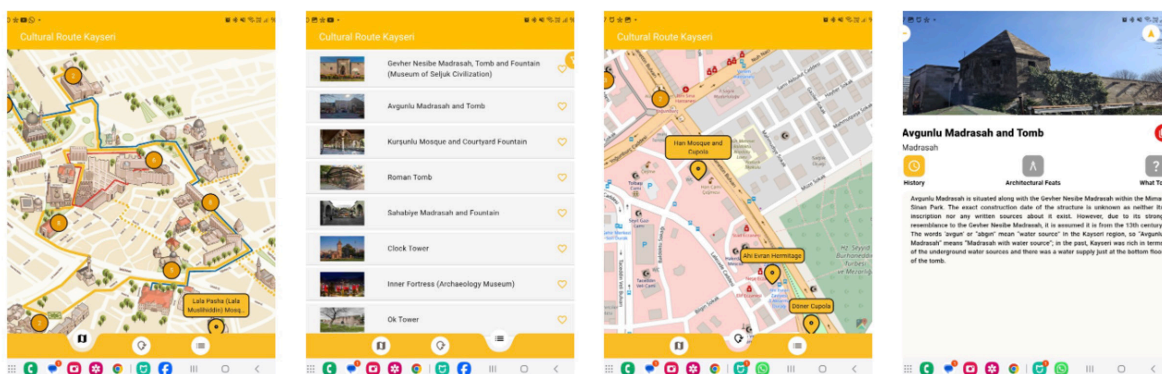


• The Cultural Route Kayseri Project

The Cultural Route Kayseri project, initiated by the Kayseri Metropolitan Municipality in collaboration with AGU, aims to digitally promote the city's rich cultural heritage. The mobile application was developed by UrbanSense AI Lab, a team of AGU students and faculty members, including Dr. Özlem Kevseroğlu and Assoc. Prof. Dr. Rifat Kurban.



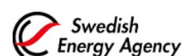
The app offers **offline access**, **detailed information on each site**, and an **interactive user experience** to guide both locals and tourists through historically and architecturally significant landmarks. This partnership-driven initiative **not only supports sustainable tourism but also contributes to the preservation, accessibility, and appreciation of Kayseri's cultural heritage**. *Please find details on [The Cultural Route](#).*



• SilverWays – Empirically Informed Routing System and Age-Friendly Accessibility Index

The SilverWays project develops a validated routing system tailored to the mobility needs of older adults, supporting the creation of a 15-Minute Neighbourhood Index. It focuses on safe, accessible, and age-friendly walking routes that connect essential services. The project is funded by Horizon Europe and TÜBİTAK (1071 program) and involves key partners such as Abdullah Gül University, Heidelberg University, Uppsala University, Kayseri Metropolitan Municipality, and the City of Mannheim. By working closely with these local and academic partners, SilverWays contributes to inclusive urban development and helps ensure that older residents can access essential services and affordable housing. For more information, *see [SilverWays](#)*.

Funded by



Silver Ways

- **Planning Development - New Build Standards**

AGU carries out **carefully planned development projects** that respect both the **historical value** of the campus and the need for environmentally responsible practices. All activities, including **new constructions, restorations, renovations, and adaptive reuse**, are conducted in close collaboration with the **Kayseri Cultural Heritage Protection Regional Board Directorate**, ensuring compliance with legal and conservation guidelines.

EDUCATIONAL PROGRAMS AND COURSES

AGU offers many educational programs and courses. In addition, AGU uses many *technological resources* in all education programs, courses, and content-specific and professional development areas. For example, many tools such as ‘Schoology,’ ‘Canvas,’ ‘Mural,’ ‘Mentimeter,’ and ‘Zoom’ for remote education, ‘Nearpod’ for presentation, ‘Screencastify’ and ‘Educreations’ for video creation, ‘EdPuzzle’ for video sharing tools have been introduced and encouraged to be used.

AGU’s multiple educational programs and courses re also open to the general public. Below are the courses offered at AGU regarding SDG 11.

- **Lifelong Learning with AGU Academy**

As the continuing education unit of AGU, the *AGU Academy* was founded to advance the university’s vision as a third-generation institution by promoting lifelong learning. The Academy offers flexible and remote programs tailored to the needs of individuals and organizations in both the public and private sectors. Key areas of activity include:

- Foreign language instruction (e.g., General English, Business English, Speaking)
- Personal and professional development courses
- IT and informatics training
- Conferences and seminars
- In-service training programs

These offerings enable learners to continuously develop skills and knowledge in a dynamic and accessible environment. Online free trainings provided by AGU Academy are listed below.

Course	Date	Link
Conflict and Peace in Social Psychology: Concepts and Solutions Training	20 December 2024	Link
Sustainable Agriculture and Permaculture Education	24 December 2024	Link

- **Integration of Remote Education**

AGU continues to integrate online education into its curriculum, with approximately 30% of courses offered in a remote format each semester. The list of courses delivered online in 2024 is provided below.

Table 6. Online courses offered by AGU in 2024

Course Code	Course Name
MBG351	Research Project
MBG464	Special Studies II
GLB 101	AGU Ways I
GLB104	AGU Ways II
GLB 203	SDG 3: Good Health & Wellbeing
GLB 204	SDG 4: Quality Education
GLB 205	SDG 11: Sustainable Cities & Communities
GLB 206	SDG 6: Clean Water & Sanitation
GLB 207	SDG 12: Responsible Consumption & Production
GLB 208	SDG 8: Decent Work & Economic Growth
GLB 209	SDG 9: Innovation and Entrepreneurship
GLB 210	SDG 10: Reduced Inequalities
GLB 216	SDG 16: Peace, Justice and Strong Institutions
GLB 270	SDG 7: Affordable & Clean Energy
GLB 300	Societal Impact
ECE 564	Machine Learning in Python
SIE 550	Urban Geology
SIE 553	Natural Disasters and Urbanization
POLS221	Introduction to Law
SOC101	Introduction to Sociology
SOC201	Introduction to Sociology
TUR 104	Teaching Turkish as a Foreign Language
TUR102	Turkish 2
HIST 201	Modern Turkish History 1
HIST 202	Modern Turkish History 2
CP 100	Career Planning
BRG 001	English Bridge
ENG 101	English 101
ENG 102	English 102

AGU has adopted a forward-thinking, digital approach to education, removing barriers of time and location and ensuring flexibility in the learning process. The university provides detailed information on remote education through its dedicated online platform, which includes resources for both faculty and students. Among the key elements of AGU's remote education system are:

1. Synchronous (live) and asynchronous (on-demand) learning options
2. Practical applications for laboratory and project-based courses
3. Online examination methods
4. Training sessions for academic staff
5. Student-centered support and guidance resources

Various guidelines and documents—such as the *Remote Education Guide*, and *Graduate Programs Online Execution Principles*, are available for further reference. Visit [the remote education website](#) for more information.

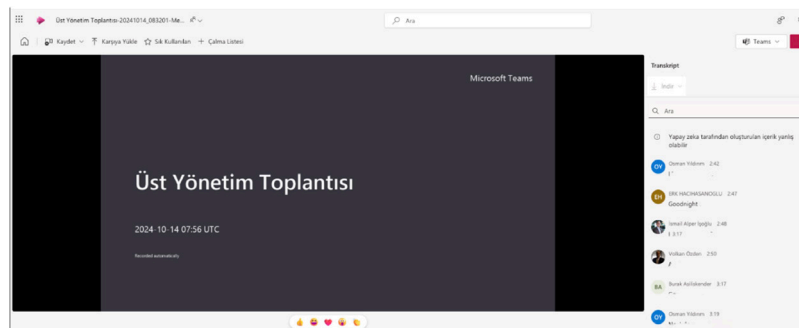
Moreover, AGU promotes remote working practices by conducting key academic and administrative meetings online. In particular, **Board of Management meetings, Senate sessions, thesis defenses, and commission meetings** are regularly held remotely through online platforms. This practice not only supports telecommuting but also contributes to reducing the need for physical presence on campus, aligning with the university's commitment to flexible and sustainable working arrangements.

• AGU Remote Education and Research Center (UZEM)

As part of its commitment to innovative education, AGU established [the Distance Education and Research Center \(UZEM\)](#) to manage and enhance online learning practices. UZEM supports both instructors and students through:

- Live and recorded learning modules ([an example of recorded learning](#))
- [Laboratory and project-based course integration](#)
- [AGU Online Learning Platform](#)
- [Online training for faculty members](#)

UZEM also provides a broad range of learning materials, including video lectures, slide presentations, and interactive tools, allowing students to complete assignments, participate in discussions, and access educational content from any location. Please find the [UZEM Regulation](#).



AGU's Board of Management Meeting held online

Tez Savunma Sınavı Duyurusu – Thesis Defence Exam Announcement 1 mesaj
25 Aralık 2024 10:37

Kimden: "agu notices" <agu.notices@agu.edu.tr>
Kime: agual@agu.edu.tr

Diğer resimler görüntülenmez. Resimleri Görüntüle
Şundan gelen mesajları her zaman görüntüle agu.edu.tr ya da agu.notices@agu.edu.tr

Değerli AGÜ Ailesi ve Dostları,

Bildiğiniz gibi Enstitümüzde gerçekleştirilen **tez savunma** sınavları halka açık olarak yürütülmektedir.

Aşağıda bilgileri verilen **tez savunma** sınavının konusu, alanı ilginizi çekiyorsa, izlemek ve dinlemek isterseniz katılmak üzere davetlisiniz.

Sağlıcakla kalın.

Fen Bilimleri Enstitüsü

Yüksek Lisans Tez Savunma Sınavı:
Tez Öğrencisi: E. İZ
Tez Konusu: D. İZ
Anabilim Dalı: Sürdürülebilir Kentsel Altyapı Mühendisliği
Tez Danışmanı: Prof. Dr. İZ
Zaman: 26.12.2024, Saat 13:00
Yer: Online MS Teams link
Link için tıklayınız.

Online Thesis Defense Announcement

• Abdullah Gül University Entrepreneurship Training Program for Women:

AGU, in collaboration with the **Kayseri Chamber of Commerce and the TOBB Kayseri Women Entrepreneurs Board**, organized the “**Entrepreneurship Training Program for Women**” at AGU’s **Sümer Campus**. The **10-week of free** program, which began on October 3, 2024, was open to the public and aimed to empower women entrepreneurs by providing them with the tools and knowledge necessary to succeed in the business world and embark on a strong entrepreneurial journey. The program covered key topics such as the basics of entrepreneurship, business development, and leadership skills. The training sessions were led by Assoc. Prof. Dr. Adil ORAN from AGU. Upon completing the program, participants received a certificate of participation, marking the culmination of their journey toward entrepreneurial success. For more information, *please see the meeting session and find the training sessions.*



KADINLARA YÖNELİK GİRİŞİMCİLİK EĞİTİMİ-7 (SKA 4, 5, 8, 10, 17)

25 Aralık 2024 Çarşamba - 25 Aralık 2024 Çarşamba

Abdullah Gül Üniversitesi ve TOBB Kayseri Kadın Girişimciler Kurulu iş birliğiyle düzenlenen Kadınlara Yönelik Girişimcilik Eğitimi'nin 7. haftasını başarıyla tamamladık!

[Devamı](#)



KADINLARA YÖNELİK GİRİŞİMCİLİK EĞİTİMİ-6 (SKA 4, 5, 8, 10, 17)

11 Aralık 2024 Çarşamba - 11 Aralık 2024 Çarşamba

Abdullah Gül Üniversitesi ve TOBB Kayseri Kadın Girişimciler Kurulu iş birliğiyle düzenlenen Kadınlara Yönelik Girişimcilik Eğitimi'nin 6. haftasını başarıyla tamamladık! Bu haftaki eğitim, "Yalın Girişimcilik" konusuna odaklanarak katılımcılara değer yaratma süreçlerini en verimli şekilde yönetme becerilerini kazandırmayı hedefledi.

[Devamı](#)



KADINLARA YÖNELİK GİRİŞİMCİLİK EĞİTİMİ-5 (SKA 4, 5, 8, 10, 17)

27 Kasım 2024 Çarşamba - 27 Kasım 2024 Çarşamba

Üniversitemiz ve TOBB Kayseri Kadın Girişimciler Kurulu iş birliğiyle Kampüsümüzde kadın girişimcileri desteklemek amacıyla başlatılan 10 haftalık girişimcilik eğitimi programının beşinci hafta oturumu gerçekleştirilmiştir.

[Devamı](#)



COOPERATION AND EVENTS

In line with its mission to contribute to regional development, **AGU** actively collaborates with local authorities to support effective urban planning and improve access to affordable housing for local residents. **AGU**'s collaborative initiatives include:

- **Collaboration Protocol Between Kocasinan Municipality and AGU**

In 2024, Kocasinan Mayor Ahmet ÇOLAKBAYRAKDAR and Abdullah Gül University Rector Prof. Dr. Cengiz YILMAZ signed a *Cooperation Protocol* to initiate broad collaboration in the fields of **social development, technology, and education**, and to engage as partners in European Union-funded projects.



The protocol also includes a **commitment to work with local authorities to address planning challenges and support local residents' access to affordable housing**, in line with national and regional development goals. This collaboration reflects a shared vision for sustainable urban growth and academic-public sector partnership. For more information, *please find the collaboration protocol*.

- **Provincial Coordination Council Meeting**

In 2024, AGU continued its engagement with local governance by participating in the **Provincial Coordination Council Meetings**, held quarterly to evaluate public investment strategies and coordinate regional development efforts. The meetings



brought together district governors, local officials, and public institution leaders to discuss priorities such as **infrastructure planning, social development, and affordable housing access**. Representing the university, **AGU's Rector Prof. Dr. Cengiz YILMAZ** took part as a **council member**, contributing to collaborative decision-making and reinforcing AGU's commitment to community-focused and sustainable development. For more information, *please find the Provincial Coordination Meeting*.

• Smart City Kayseri:

AGU plays an active role in promoting sustainable urban development by participating in the **SmartCITY Kayseri initiative**. Situated in central Türkiye, Kayseri is a city recognized for both its cultural heritage and economic vitality, and it is now advancing toward a more sustainable future through smart city innovations. These efforts focus on enhancing livability through technological advancements in sectors such as energy, environmental sustainability, and urban



infrastructure. AGU consistently engages in **SmartCITY coordination meetings and related conferences**, where stakeholders address urban planning, infrastructure improvements, and future development strategies. By taking part in these platforms, AGU contributes its academic expertise to shaping smart, community-oriented urban policies in collaboration with local government bodies. *Please find* detailed information *about the SmartCITY Kayseri meeting* held in 2024.

• Kayseri City Council

Abdullah Gül University collaborates with local authorities through its active involvement in the Kayseri City Council to address urban planning and development challenges. Faculty members from Abdullah Gül University actively contribute to the efforts of the Kayseri City Council. Prof. Dr. Burak Asiliskender is involved in the Urban Planning and Development Working Group; Dr. Özlem Kevseroğlu Kurban participates in both the History and Culture and Digital Technologies Working Groups; Dr. Ahmet Baş takes part in the Transportation Working Group; and Assoc. Prof. Dr. Armağan Teke contributes to the Lloyd Elderly Health and Care Working Group. These representatives provide scientific insight and expertise to support local governance. *Please see the Kayseri City Council*.



İMAR VE KENTLEŞME ÇALIŞMA GRUBU

1 SİBEL LİVİDİMLİ	ÇEVRE SEHİRCİLİK VE İKLİM DEĞİŞİKLİĞİ İL MÜDÜRÜ
2 PROF. DR. BURAK ASILISKENDER	ABDULLAH GÜL ÜNİ. MİMARLIK FAKÜLTESİ DEKANI
3 DR. KAMURAN ARI	İNŞAAT MÜHENDİSLERİ ODASI BAŞKANI
4 MURTAZA ER	MİMARLAR ODASI BAŞKANI
5 TAMER CİNEL	KAYSERİ ŞEHİR PLANCILARI ODASI BSK.
6 SEDA KAPLAN	AK PARTİ TEMSİLCİSİ MİMAR
7 LEVENT LİVİDİMLİ	MHP TEMSİLCİSİ ŞEHİR PLANCISI
8 MURAT SUZU UNALAN	CHP TEMSİLCİSİ ŞEHİR PLANCISI
9 BÜLENT MEHMET HODUL	İYİ PARTİ TEMSİLCİSİ AVUKAT
10 TAYLAN ÖZTÜRK	TMMOB, Harita ve Kadastro Müh. Odası Kayseri İl Temsilcisi
11 YALÇIN DAĞTEKİN	DAĞTEKİN İNŞAAT YÖN. KURULU BAŞKANI
12 ETHEN BURAK PİRTİCİ	ÇEVRE VE ŞEH. İMAR PLAN. KOOR. SB. MÜD.
13 AHMET BULUT	KAYSERİ OSB RUHSAT PROJE MÜDÜRÜ-HARİTA MÜH.
14 AHMET SERHAT KARAAHMETÖĞÜLLÜ	TMMOB, PEYZAJ MİMARLARI ODASI
15 MUSTAFA UNUT ÖZDEMİR	JEOLJİ MÜHENDİSLERİ ODASI İL TEMSİLCİSİ
16 ASLHAN ATILGAN	TMMOB PEYZAJ MİMARLARI ODASI

YÖNLENDİRİCİ: MURTAZA ER

KAYSERİ KENT KONSEYİ DİJİTAL TEKNOLOJİLER ÇALIŞMA GRUBU

PROJE: 2

Proje/Çalışma Raporu Konusu:

Yaya güvenliği, kent içi ulaşımın temel unsurlarından biridir. Trafik düzenlemeleri, altyapı tasarımı ve toplumsal farkındalık üç eksenle ele alınmalıdır. Kaldırım genişlikleri en az 2,5 m olacak şekilde planlanmalı, yaya geçitleri net ve yükseltilmiş biçimde işaretlenmelidir. Hiz kontrolü için kasis, daraltılmış şerit ve doğal hız kesici uygulamalar kullanılabilir. Aydınlatma ve görsel yönlendirmeler, gece güvenliği artırır. Eğitim kampanyaları ile sürücü ve yaya davranışları iyileştirilir. Bu yaklaşımlar bir arada uygulandığında kazalar anlamlı ölçüde azalacaktır.

Mevcut bir sorundan hareketle Kayseri'de yaya güvenliğini artırmak amacıyla mimarlık öğrencilerinin yol kesitleri tasarımına odaklanacak seçmeli bir ders programı geliştirilmesi. Ders, kent içi sokakların fiziksel ve kullanım boyutlarını inceleyerek yaya dostu mekân tasarımı ilkelere öğretilecek. Öğrenciler mezuniyet sonrası uygulamada hız düşürme ve yaya öncelikli planlama bilincine sahip olacaktır.

Paydaşlar:

AGU Mimarlık Bölümü, ERÜ Şehir ve Bölge Planlama Bölümü, Kayseri Büyükşehir Belediyesi Ulaşım Dairesi, Yerel Halk ve Sivil Toplum Kuruluşları

• The Healthy Cities Association

In 2024, AGU strengthened its collaboration with the Healthy Cities Union to support urban resilience and development priorities, including affordable housing. Established under Local Government Unions Law 5355 and officially recognized in the 2004 Official Gazette, the Healthy Cities Union promotes the World Health Organization's Healthy Cities Movement in Türkiye. **The Healthy Cities Union identified ten priority sectors to strengthen “Urban Resilience” in cities, which encompass key areas such as participatory governance, urban health services, temporary and permanent housing design, urban planning focused on health and resilience, environmental measures, emergency services, social services, conservation of natural areas, financial management, and social capacity building.** This movement, launched in 1988, aims to assess city health indicators and address factors impacting urban well-being. Today, the Healthy Cities Network includes 1,400 cities and municipalities across five regions, with Türkiye's Healthy Cities Union representing 27 countries and 100 European cities/municipalities.



AGU is represented on the Union's Advisory Board by *Assoc. Prof. Mustafa Ayten*, reinforcing AGU's commitment to sustainable urban planning. The Union's mission, aligned with the principles of Sustainable Development and Creating Sustainable Cities, fosters training, workshops, symposiums, and international congresses on urban and environmental health. Through this engagement, AGU collaborates with local authorities to enhance sustainable, community-focused planning and development, addressing affordable housing and broader urban resilience goals.

• Sultan Marshes: Protecting Turkey's Natural Heritage

Located in Kayseri, Sultan Marshes—one of Türkiye's 14 Ramsar sites—plays a vital role in global biodiversity as a key habitat for over 300 bird species, including the endangered white-headed duck. Positioned on major bird migration routes, this 24,500-hectare wetland is protected as a national park for its ecological and cultural value.

A multi-stakeholder **project launched in 2024**, with active involvement from Abdullah Gül University, focuses on conserving water resources, enhancing sustainable tourism, and protecting threatened species. A recent workshop, held under Türkiye's revised development plan for the area, gathered officials, local leaders, and environmental institutions to strategize joint conservation actions.

This collaborative effort supports **UN Sustainable Development Goal 11**, promoting sustainable use of natural spaces and preserving urban-adjacent ecosystems. By protecting Sultan Marshes, stakeholders are not only safeguarding Turkey’s natural heritage but also advancing global environmental goals through ecotourism and biodiversity conservation.



- **3rd Kayseri Architecture Festival**

In 2024, AGU collaborated with the **Kayseri Branch of the Chamber of Architects (TMMOB)** and other local stakeholders to host the **3rd Kayseri Architecture Festival**. Themed “**Retold Stories**”, the event was held on AGU’s Sümer Campus in the **former Maintenance and Repair Workshop**, a site currently under evaluation for adaptive reuse—aligning directly with the festival’s focus on reinterpretation and urban transformation.



The festival brought together leading architects, scholars, and urban planners—such as Nevzat Sayın, Christele Harrouk, and Kim Seunghoy—to discuss the role of architectural storytelling in reshaping cities. The event served as a platform to examine planning

challenges and opportunities in Kayseri, highlighting themes of **urban regeneration, sustainable development, and the repurposing of historical buildings for community use**. *Please see details on [3rd Kayseri Architecture Festival](#).*

- **Ebru (Marbling Art) (Lifelong Learning Project by AGU–Kocasinan Public Education Center)**

Through the collaboration between AGU’s **Health, Culture, and Sports Department** and the **Kocasinan Public Education Center**, a total of **527 students and staff** are participating in cultural courses during the 2023-2024 and 2024–2025 academic years. These courses are designed to foster the social, artistic, and cultural growth of the university community. Participants who complete the programs successfully are awarded certificates. *Please see the courses.*



Table 7. Course Information for the 2024–2025 Academic Year

Course Name	Number of Participants
First Aid	18
Sign Language	120
Diction	40
Total	178

Table 8. Course Information for the 2023–2024 Academic Year

Course Name	Number of Participants
Painting	58
Ebru Art	48
First Aid	70
Sign Language	74
Total	349

- **City-Wide Cycling Awareness Event**

AGU hosts an annual Cycling Awareness Tour as part of the GLB205 Sustainable Cities and Communities course. Organized in cooperation with the Kayseri Metropolitan Municipality, the event involves closing a major city road to motor vehicles for one weekday, allowing the public to participate in a community cycling tour. Students, faculty, and local residents take part, with free bicycles provided by Kayseri Transportation Co. Now in its fifth year, the tour highlights cycling as an eco-friendly alternative mode of transportation and aims to raise public awareness about healthy living and the importance of sustainability in urban mobility. *Please see the City-Wide Cycling Awareness Event.*



Cycling Awareness Tour

BICYCLE SAFETY AWARENESS PROJECT

EMPOWERING CYCLISTS TO AVOID DANGEROUS DRIVERS

WHAT IS THE PROBLEM? Cyclists face significant risks from bad drivers and poor infrastructure, leading to injuries and accidents. Our project aims to raise awareness and provide practical safety solutions for urban cyclists.


WHY THIS PROBLEM EXISTS?


- Poorly maintained bike lanes
- Reckless driver behavior
- Lack of proper signage
- High-risk intersections

WHAT DO WE AIM TO FIX? **UNWARE BIKER RIDERS ON ROADS**

UPCOMING ACTIVITIES

- Week 4-5: Workshops on safe cycling
- Week 6: Discussion on safety solutions
- Week 7: Evaluation of awareness
- Week 8: City cycling tour





JOIN OUR MISSION TO MAKE CYCLING SAFER!
CONTACT US VIA INSTAGRAM: @GLBCYCLEBIKE.

Bicycle Friendly Project Poster Prepared Within the Scope of GLB 205 Course

- **Kültepe-Kaneş Technical Trip**

Within the scope of the course “ARCD 203 – Alternative Construction Methods,” a technical site trip was organized by the Faculty of Architecture to the historical Kültepe-Kanesh Archaeological Site, one of the most significant early centers of trade and urbanization in Anatolia.

Accompanied by **Assoc. Prof. Dr. Buket Metin**, architecture students explored the site, which served as the hub of a complex network of Assyrian trade colonies in the 2nd millennium B.C. The visit provided students with first-hand experience of early construction techniques, material use, and the spatial organization of one of the earliest documented settlements in Anatolia. Through on-site observations and discussions, students gained valuable insights into alternative and historical construction practices, deepening their understanding of the architectural heritage and its relevance to modern design approaches. *Please find Kültepe-Kaneş Technical Trip.*



- **“Designs of Hungarians in Türkiye” Exhibition**

As part of the 2024 Hungarian-Turkish Cultural Year, AGU hosted the “**Designs of Hungarians in Türkiye**” exhibition at its **Sümer Campus**, organized by the Faculty of Architecture. The exhibition highlighted the architectural contributions of Hungarian designers to Türkiye’s urban heritage from the late Ottoman era to the early Republic. Hungarian Ambassador to Ankara Viktor Matis attended the opening ceremony. **Open to the public**, the event fostered **international collaboration and promoted cultural preservation through extensive archival research.** *Please see the Exhibition.*



- **The 3rd Traditional Psychology Student Gathering at AGU**

The 3rd Traditional Psychology Student Gathering was held at the **Abdullah Gül Museum**, jointly organized by the Psychology Club of Nuh Naci Yazgan University and the Life and Psychology Club of AGU. The event included **academic talks, orientation activities, medieval-themed team games, and a museum tour** offering cultural and historical insights. *Please find the 3rd Traditional Psychology Student Gathering.*



- **AGU Hosts Art Studies**

AGU continues to support arts and culture by hosting a weekly choir led by music teacher Gülay Tuncer and directed by Prof. Dr. Murat Kanbur. Held every Monday at AGU's conference hall, the choir brings together academics, doctors, teachers, and students from both Erciyes University and AGU. These music-filled gatherings foster a sense of unity and community among participants while making the arts accessible on campus. For more information, [see the Art Studies](#).



- **International Day of Persons with Disabilities**

To mark the International Day of Persons with Disabilities, AGU hosted a **public event** in collaboration with the Kocasinan District Directorate of National Education at one of its accessible cultural venues. The program featured performances by special education students, celebrating inclusivity and cultural **diversity through music, dance, poetry, and pantomime**. For more information, [find the International Day of Persons with Disabilities](#).



- **Meeting of Young Science Heroes / FIRST LEGO League Explore 2023–2024 Master Piece Season Event**

AGU hosted the “Meeting of Young Science Heroes / FIRST LEGO League Explore 2023-2024 Master Piece Season” in collaboration with Kayseri Bahçeşehir College and the Science Heroes Association. Held in open, public areas on campus, the event brought together 16 youth teams from across Türkiye to showcase their science and engineering projects, fostering community engagement and innovation. For more information, [see the event](#).



- **The Rhythm of Spring Festival**

AGU held its “MSS Rhythm of Spring Festival” on the Sümer Campus as part of Culture and Arts Week, welcoming both students and the broader community in line with its open campus philosophy. The four-day event featured outdoor films, concerts, theatre, games, competitions, and conferences. For more information, [see the Rhythm of Spring Festival](#).



- **University Promotion Fair-Anatolian Universities Association**

The “University Promotion Fair” organized by the **Anatolian Universities Association** was held at **AGU’s Sümer Campus**, attracting thousands of high school students exploring academic opportunities. **Representatives from various universities**, including several rectors, **engaged with attendees**, offering insights into programs, admissions, and campus life. For more information, [please see Promotion Fair](#).



- **Young Designers Training at AGU**

The “Young Designers Training” program at AGU’s **Sümer Campus**, led by graphic designer Nur Dirgenali, taught 4th-grade students from Sümer Osman Gökso Primary School about design principles and logo creation, allowing them to apply their skills creatively. Afterwards, Dr. Sümeyra Ayık conducted a sustainability awareness session focused on SDG-2 “Zero Hunger,” promoting early education on global challenges. For more information, [please find Young Designers Training](#).



- **Think About the Future, Take Action Project**

Under the coordination of AGU faculty members Dr. Sümeyra Ayık and Dr. Sinan Akyüz, and supported by TÜBİTAK, the training “**Think About the Future, Take Action: Educator Training for a Sustainable Future Focused on Classroom Teachers - 3**” was held at AGU’s **Sümer Campus**. The program provided undergraduate students from four universities with theoretical and practical SDG sessions. It aimed to strengthen future teachers’ knowledge and awareness of global sustainability challenges and education for a sustainable future. For more information, [please find the project](#).



- **University Preference and Promotion Days**

As part of its promotion period, AGU held University Preference and Promotion Days from July 20 to August 5, featuring campus tours and presentations by various university units. **Open to the public**, the event aimed to raise awareness of AGU's academic programs and global opportunities for prospective students. For more information, [*please see the University Preference and Promotion Days.*](#)



- **Model United Nations Conference (MUNOS'24)**

Under the auspices of the **Kayseri Governorship and in collaboration with AGU, Erciyes University, Kayseri University, Nuh Naci Yazgan University, and Cappadocia University**, the Osman Ulubaş Köşk Anatolian High School International Model United Nations Conference (MUNOS'24) was held from May 3 to 7, 2024, **at AGU Sümer Campus.**

On May 5, 2024, AGU hosted a special session of the conference, which **was open to the public.** The event brought together students and participants from various institutions to engage in diplomatic discussions and simulations, fostering international awareness and dialogue among youth. For more information, [*please find MUNOS'24.*](#)



- **Traditional Turkish Folk Dances**

AGU regularly features traditional Turkish folk dances such as Zeybek, Halay, and Horon during campus events. These performances play an important role in preserving Türkiye's rich cultural heritage and introducing it to younger generations. As purely intangible cultural expressions, these folk dances represent the living traditions, values, and identities of local communities. By showcasing regional dances, the university supports the continuity

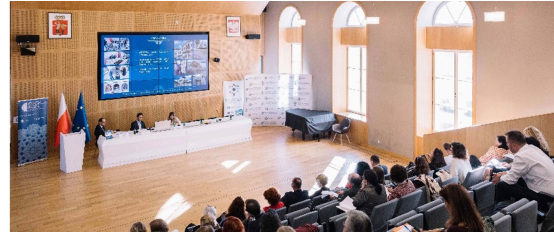


of traditional art forms. AGU actively contributes to the promotion and safeguarding of cultural diversity. *Please find the Traditional Turkish folk Dances event.*



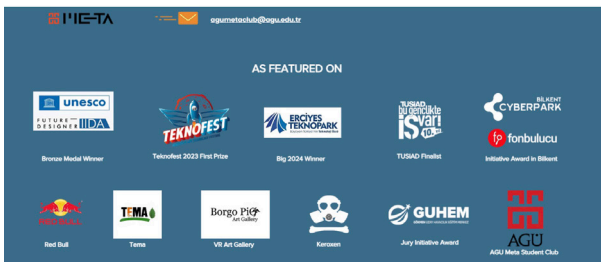
- **18th Annual Meeting of the South East European Network of Experts on Intangible Cultural Heritage**

Dr. Özlem Kevseroğlu from AGU's Faculty of Architecture participated in the 18th Annual Meeting of the South-East European Experts Network on Intangible Cultural Heritage, held in Warsaw, Poland. **Organized by the University of Warsaw with support from UNESCO, the event focused on safeguarding and sustaining intangible cultural heritage in urban settings.** Representing Türkiye alongside officials from the Ministry of Culture and Tourism and other academics, Dr. Kevseroğlu presented national policies and successful practices from Kayseri. She also **proposed policy recommendations for preserving cultural heritage within the urban context.** For more information, *please see the organization.*



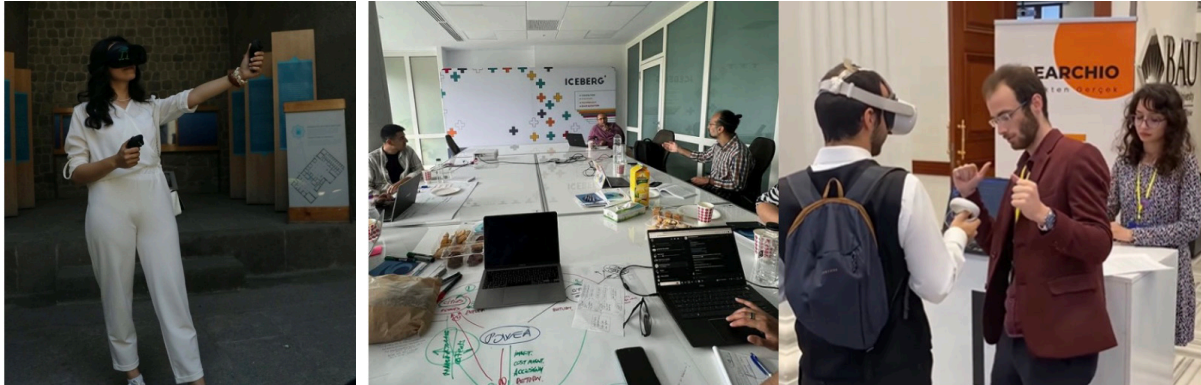
- **AGU Students Revive History with VR!-Cultural Heritage Project by AGU Students**

Crearchio, a student team from AGU's Meta Club, created a **virtual museum of the 817-year-old Gevher Nesibe Medrese**, Anatolia's first medical school, using 3D modeling and VR technology. Their goal is to preserve cultural heritage and share it globally through immersive experiences. The team previously recreated the **Bandırma Ferry** and *even Mars* in virtual environments.



They also presented their project at the **EIT Jumpstarter Local Joint Program in Romania**, aligning with their mission to transform how people experience cultural heritage through VR and AR. In 2024, Crearchio showcased their **VR Roman House** project at **Bahçeşehir Uni-**

iversity's *Games for Change event* and introduced VR to students from schools like *İstem Koleji*. They continue to inspire and educate by blending culture, history, and virtual reality.



- **AGU Bostan (Garden)**

The AGU Bostan platform is dedicated to promoting sustainable urban agriculture. Both students and staff **are allocated garden plots, where they learn sustainable planting techniques and experience hands-on agriculture. Harvests are celebrated annually with a community picnic, fostering a deep connection to nature and awareness of sustainable food practices.** In 2024, AGU hosted the Labor & Food event, featuring sapling planting and a picnic celebration. The event included planting saplings in the garden and a picnic in the garden. Please see the AGU Bostan (Garden).



AGU Bostan Picnic Event

- **World Art Day Exhibition: Art Sets You Free**

An art exhibition titled “Art Sets You Free” was held at Abdullah Gül University, featuring works by inmates from Kayseri prisons. Organized in collaboration with the Kayseri Chief Public Prosecutor’s Office, the event highlights the creative talents of incarcerated individuals. Proceeds from the exhibition will be directed to the inmates. This initiative contributes to preserving intangible cultural heritage by showcasing traditional skills, stories, and expressions from often marginalized communities.



- Culture and Art Gatherings

As part of its commitment to social cohesion and cultural inclusion, AGU, in collaboration with the **United Nations High Commissioner for Refugees (UNHCR)** and the **Afghan Refugees Solidarity and Aid Association (ARSA)**, organized a “Culture and Art Gathering” at the Rectorate Conference Hall on AGU’s Sümer Campus. The event featured a musical performance by ARSA’s music group under the coordination of Dr. Zakira Hekmat, President of ARSA. Additionally, a video presentation showcased joint projects between ARSA and Mehmet İlgü Primary School. The program also included a traditional Zeybek dance performance and artistic contributions from children and youth representing international solidarity groups. The event aimed to celebrate the cultural heritage and artistic expressions of displaced communities while fostering mutual understanding and intercultural dialogue. For more information, [please find the Culture and Art Gatherings](#).



- AGU Intercultural Series

The AGU Intercultural Series is an interactive platform where members of the AGU community, representing diverse nationalities, present their home countries and cultures to fellow students, staff, and external guests. Initiated by the [AGU International Office](#) in collaboration with the [AGU International Association](#) and student volunteers, the series aims to celebrate global diversity and promote intercultural understanding. Creative tools such as videos, performances, and traditional foods are used to create an engaging, educational, and entertaining atmosphere for all attendees. For more information, [please find AGU Intercultural Series](#).





